

Cleanse™

ORGANIC SOIL REMEDIATION SYSTEM



Turf Fuel®

Removes
Organic Acid



Restores Natural
Hydration



Increases
Infiltration



Cleanse™ is a powerful tool for use on soils that display signs of localized dry spot (LDS), poor infiltration, or poor soil health. Cleanse combines an even stronger cleaning agent than in previous formulations added to Turf Fuel's proprietary **Soil Sync** technology. This two-part system works to attack hydrophobic organic acids responsible for LDS while delivering key enzymes to promote healthy soil biology and root system development. This combination gives treated soil an improved rewetting capability and more robust biological portfolio.

FEATURES AND BENEFITS

- Reduces the Cause of LDS
- Increases Water Penetration
- Improves Hydration
- Revitalizes Deficient Soils
- Improves Nutrient Availability
- Safe, No Burn Formulation

Application Instruction:

Apply Spring and Fall (4-6 fl. Oz/ 1000ft²)

Make 2-3 applications at, or just prior to, the onset of LDS symptoms.

supplemental spot spray applications (4-6 fl. Oz/ 1000ft²)

Follow up with monthly applications of The Kraken™ or Vanquish™.

Safe on Turf

CONTAINS



Contact us for more information
info@target-specialty.com

turfuel.com |     

15415 Marquardt Ave., Santa Fe Springs, CA 90670

Cleanse™

ORGANIC SOIL REMEDIATION SYSTEM

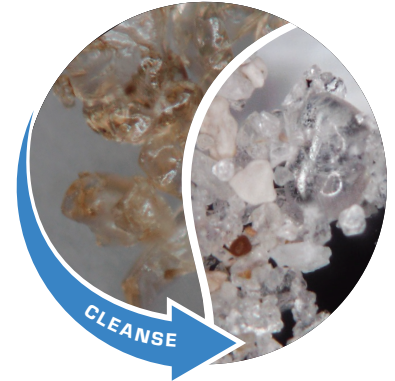


Cleanse is an advanced soil remediation agent. Unlike traditional soil surfactants that temporarily mask the symptoms of hydrophobic soils, Cleanse with SOIL SYNC attacks the problem by reducing hydrophobic organic materials throughout the root zone. Cleanse's dual agents work to dissolve and reduce hydrophobic organic acids (HOA) from critical turf locations. Now with SOIL SYNC, Cleanse contains key components to commence soil rejuvenation and bolster faster turf recovery.

Cleanse is the first soil remediation agent that treats and reduces hydrophobic organic acid's while providing both soil / plant health additives for faster turf re-establishment.

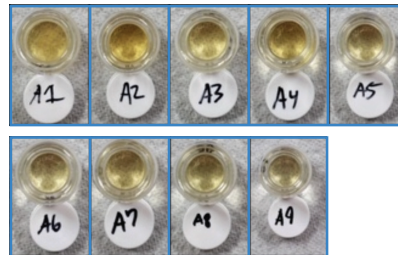
HOW DOES CLEANSE WORK?

This magnified image shows sand that has been treated with Cleanse. The specially selected cleansing agents and enzyme remove the brown hydrophobic coatings, restoring the sand to its natural highly functioning state.

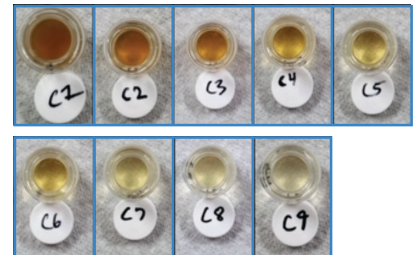


Leachate collected from soil that was flushed with water (left) and diluted Cleanse (right). Each image is a subsequent watering event.

CONTROL



CLEANSE



REAL WORLD APPLICATION



Turf Fuel®